

NANO-CERAMIC®



WWW.NANO-CERAMIC.COM INDUSTRIAL PROTECTIVE COATINGS



10 YEARS
WARRANTY

Technical **Permanent Coating System**

What makes NANO-CERAMIC Permanent Coating System so durable?

NANO-CERAMIC permanent coating system is the latest generation of protective coating which transforms paint into a hard ceramic, providing superior scratch resistance and near-permanent protection for all exterior or interior surfaces.

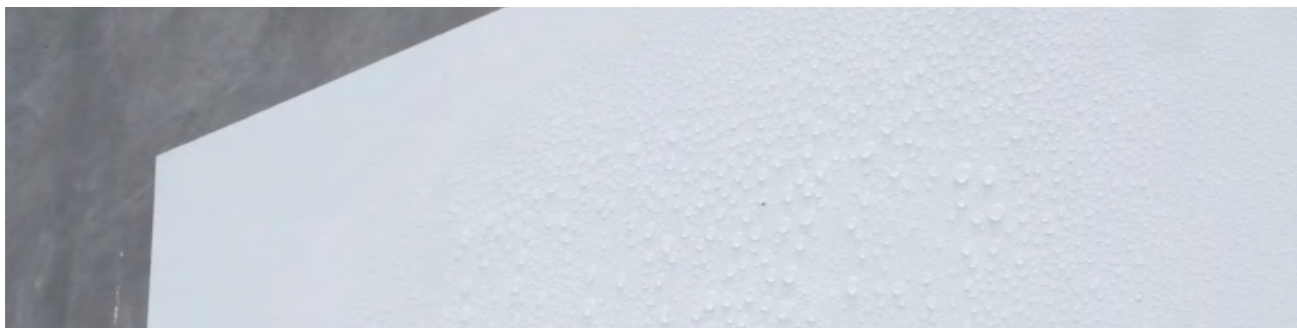
NANO-CERAMIC permanent coating system is 300°C resistant and more than 4 times stronger than traditional acrylic based paint finishes, and is effectively preventing damage that would otherwise affect the appearance and integrity of the original surface.

Zero Maintenance for decades to come!

Our NANO-CERAMIC permanent coating system is rigorously tested by an independent testing laboratory according to the European standard for outdoor paints (EN 1504-2) as mentioned in our separate test report.

Can NANO-CERAMIC Permanent Coating System be applied on any surface?

The NANO-CERAMIC permanent coating system can be applied directly or indirectly on all kinds of interior and /or exterior surfaces (absorbing and non-absorbing), such as concrete, steel, wood, acrylic, gypsum and many more.



Is NANO-CERAMIC Permanent Coating System self-cleaning?

NANO-CERAMIC permanent coating system provides a permanent hydrophobic surface that is self cleaning, easier to clean and stays cleaner longer as water and dirt can not penetrate the ceramic layer. NANO-CERAMIC permanent coating system is resistant to water vapor and water absorption.

Cities are getting hotter today by climate change.

Can NANO-CERAMIC Permanent Coating System cool down your house??

NANO-CERAMIC revolutionary Coolest White Paint has superb reflective properties of about 80% of the sun rays.

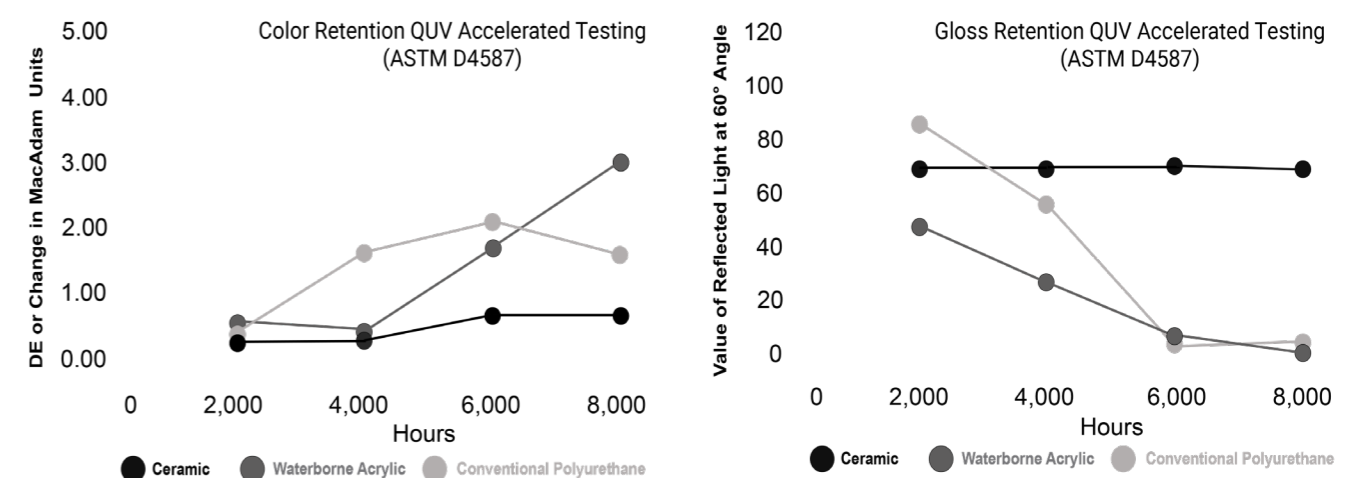
Our Coolest White Paint shields your house by blocking sunlight (passive cooling by +/- 6 °C), which effectively can reduce annual electricity cost and greenhouse gases.

Our high tech reflective Coolest White Paint cools down the heat which means less air-conditioning. NANO-CERAMIC Coolest White Paint has an extremely high TSR value (Total Solar Reflectance) of 88%.

Other paints are simply not suitable for longterm harsh outdoor environments.

In order to avoid poorly maintained properties (concrete rot, chipped and weathered paint, etc) for the next decades, our Permanent Coating System is simply the best solution to keep the value of your investment in place.

Superior in Color & Gloss Retention



A special selection of high grade tinting chemicals computerized dispersed in a superior ceramic resin.

Conventional gelcoats are a mixture with Epoxy or Polyurethane resins, of which the quality of resin and pigments are the most important factor in the ultimate strength. Most have a lifespan of 15 years, with hardness, color and gloss retention (sun fading) and manual mixing towards consistent quality being the most common problems in keeping the desired object at an aesthetically pleasing level.

Quality Comparison of paints technologies

In case written in bold font it means existing shortcomings in quality.

Characteristics	Acrylic Latex walls ceilings	Acrylic walls floors	Epoxy floors	Polyurethane waterproofing	CERAMIC® all surfaces
Primer	Yes	Yes	Yes	Yes	No
Adhesion Strength	Poor	Poor	Poor	Poor	Excellent
Cross Cut Test	Poor	Poor	Good	Poor	Excellent
Abrasion Resistance	Poor	Poor	Average	Poor	Excellent
UV Radiation Resistance	Average	Average	Poor	Good	Excellent
Artificial Atmospheric Agents	Poor	Poor	Good	Good	Excellent
Colour Retention	Average	Average	Poor	Poor	Excellent
Gloss Retention	Poor	Poor	Poor	Poor	Excellent
Chemical Resistance	Good	Good	Good	Poor	Excellent
Severe Chemical Attack	Poor	Poor	Average	Poor	Excellent
Temperature Resistance	60°C	91°C	177°C	263°C	300°C
Thermal Shock Resistance	Good	Good	Poor	Good	Excellent
Carbon Dioxide Permeability	Poor	Poor	Good	Poor	Excellent
Permeability water vapour	Average	Average	Good	Average	Excellent
Water Absorption Rate	5-15%	1%	2%	3%	0%
Aging at 70°C	Poor	Poor	Good	Average	Excellent
Adhesion Strenght Pull-off	Poor	Average	Good	Poor	Excellent
Impact Resistance	Poor	Average	Good	Poor	Excellent
Anti-Graffiti	No	No	No	No	Yes
Anti-Termite (Wood)	No	No	No	No	Yes
Hydrophobic Self Cleaning	No	No	No	No	Yes
Easy to Clean	No	No	No	No	Yes
Total Solar Reflectance (TSR)	60 (white)	60 (white)	60 (white)	60 (white)	88 (white)
Expected Lifetime in Years	<7	<7	<5-15	<5-15	15-30+

10 High Tech Coatings and Paints for All Paint Jobs



Topcoat Transparent Gloss
for glossy surfaces
SI112000 (2K) 30 Years+
2L / 1.900gr **Page 6**



Topcoat Transparent Matte
for matte surfaces
SI122000 (2K) 30 Years+
2L / 2.000gr **Page 8**



Topcoat Textured Transparant
for semi gloss surfaces
SI312000 (2K) 30 Years+
2L / 2.000gr **Page 10**



Paint Coolest White
for egg-shell surfaces
SI132000 (2K) 25 Years+
2L / 3.300gr **Page 12**



Paint Coolest White
for egg-shell surfaces
SI152000 (1K) 20 Years+
2L / 3.000gr **Page 14**



The Smartest Antifouling
Transparent colorable
SI144000 (3K) 8 Years+ (repaintable)
4L / 4.300gr **Marine Brochure**



Paint Strongest White
for glossy surfaces
SI212000 (2K) 30 Years+
2L / 2.400gr **Page 16**



Paint Strongest White
for satin surfaces
SI222000 (2K) 30 Years+
2L / 2.500gr **Page 18**



Paint Textured White
for semi glossy surfaces
SI412000 (2K) 30 Years+
2L / 2.400gr **Page 20**



Paint Textured White
for matte surfaces
SI422000 (2K) 30 Years+
2L / 2.500gr **Page 22**

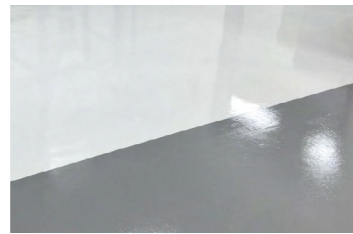


The Smartest Antifouling
black/red/blue/grey
SI144000 (3K) 8 Years+ (repaintable)
4L / 4.300gr **Marine Brochure**

Application examples



WATERPROOFING



SUBSTITUTE EPOXY



NON-SLIP



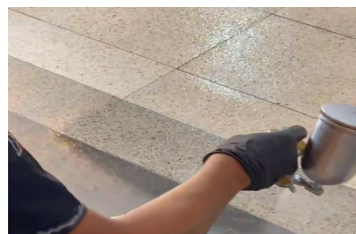
HEAT REJECTION



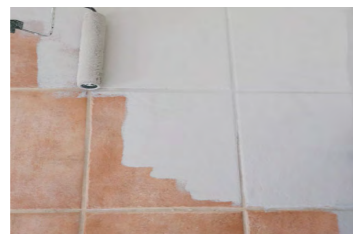
EXTERIORS



ANTIFOULING



TOPCOAT RENEWAL



CERAMIC RENEWAL



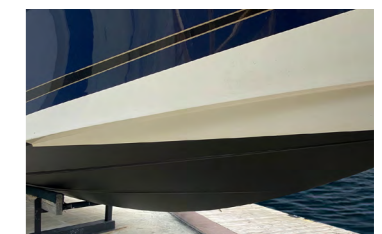
NON-SLIP



NON SLIP



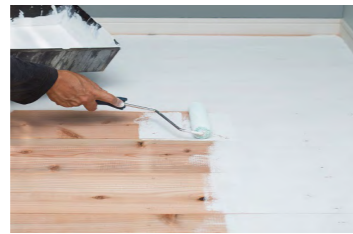
INTERIORS



YACHTS



GRANITE



WOOD



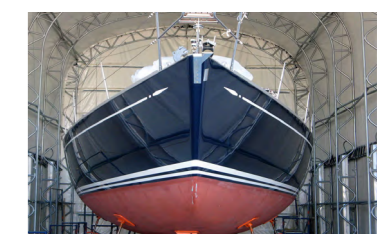
STEEL PLATES



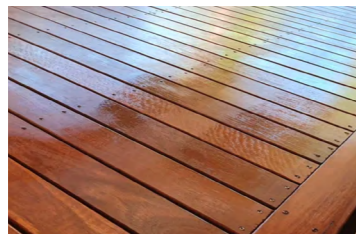
ISOLATION



BATHROOMS



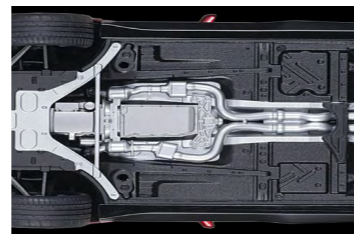
SAILING BOATS



WOOD



POOLS



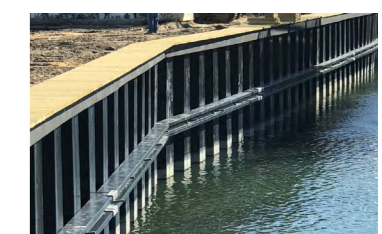
UNDERCOATING



SHIELD EMI-RF



HALL WAYS



SLUICE WALLS



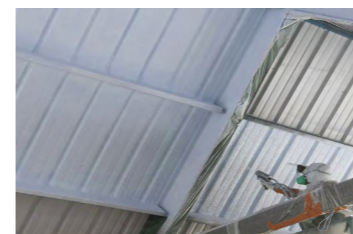
CONCRETE



BASEMENTS



ANTI CORROSION



ISOLATION



INFRASTRUCTURE



SLUICE DOORS

Protect every surface for decades to come

SI11 2-Component (2K)

Topcoat Transparent for glossy surfaces

Article : SI112000 2L / 1.900gr

Consumption : 3 layers +/- 270gr/m² - 285ml/m² 75 micron = 7m²

Reachable area : 2 layers +/- 180gr/m² - 190ml/m² 50 micron = 14m²

: 1 layers +/- 90gr/m² - 95ml/m² 25 micron = 21m²

Hardness : H9

Used for : The system can be applied directly or indirectly on all surfaces (porous and non-porous) such as concrete, steel, wood, acrylic, gypsum, painted or unpainted surfaces, indoors, or outdoors.

Application area : Buildings, airports, offshore structures, bridges, tunnels, hotels, private housing, etc.

SI11 is an incredibly strong 2-component paint system which forms a durable matrix of molecular bonds (transformation to ceramic) resulting in permanent protection of the surface.

Three simple steps: Clean, Dry, and Apply.

- Easily repels water, dirt, dust, and pollutants.
- This coating is permanent hydrophobic
- Restores damaged finishes and reduces cleaning intervals.
- Resistant to all kinds of chemicals and UV radiation.
- Superior anti-pollution and anti-corrosion properties.
- This coating can withstand temperatures of 300°C. suitable for making walls fire retardant and is most best solution to make rooftops waterproof

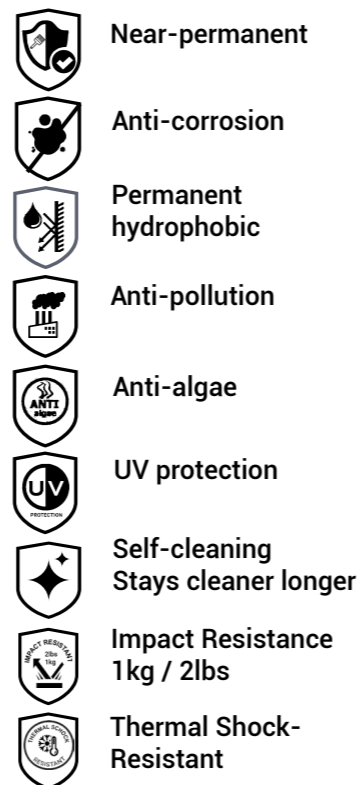
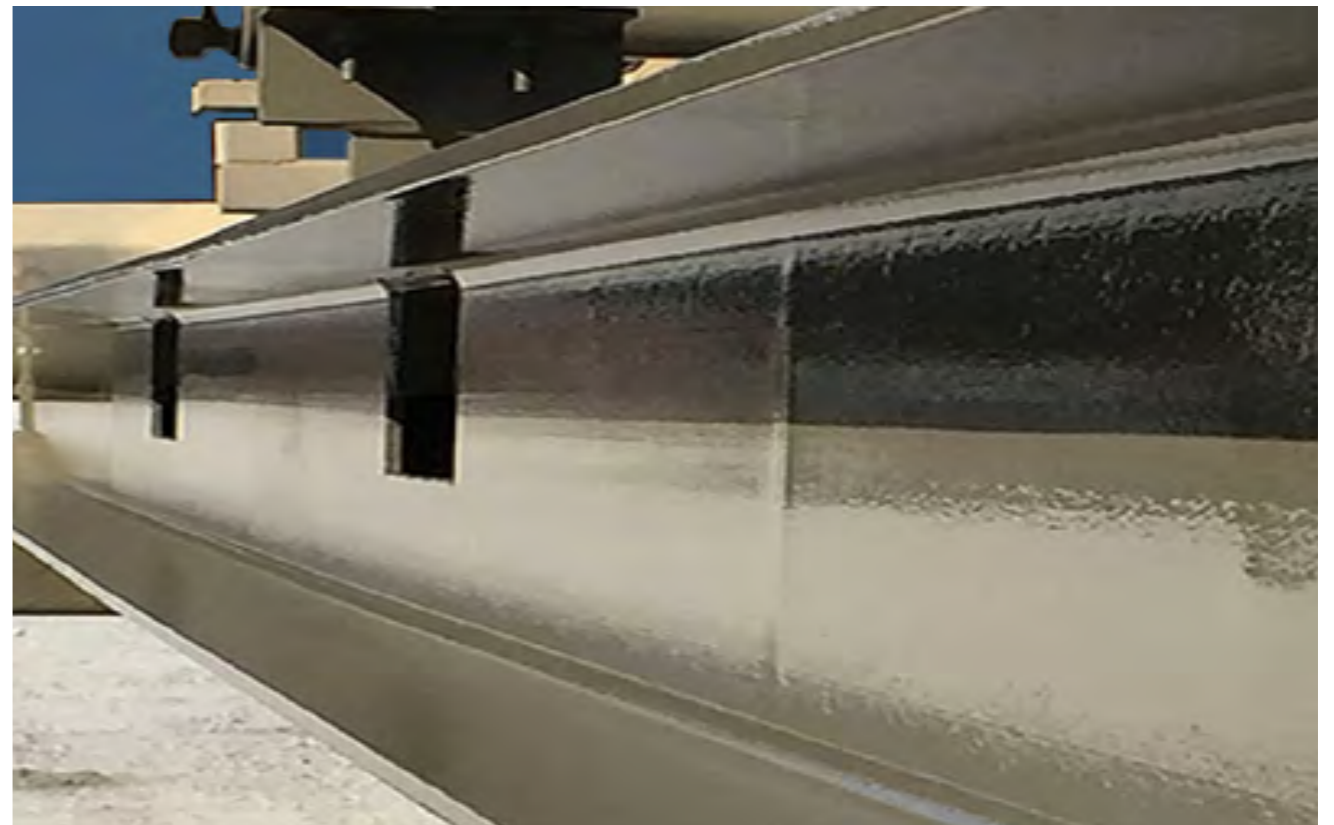
Expected life duration up to 30 years+



How to use: Page 32



Chemical Resistant - Anti-Corrosion



Near-permanent

Anti-corrosion

Permanent hydrophobic

Anti-pollution

Anti-algae

UV protection

Self-cleaning
Stays cleaner longer

Impact Resistance
1kg / 2lbs

Thermal Shock-
Resistant

SI12

2-Component (2K)

Topcoat Transparent Matte for matte surfaces

Article Nr. : SI122000 2L / 2.000gr

Consumption : 3 layers +/- 270gr/m² - 285ml/m² 75 micron = 7m²

Reachable area : 2 layers +/- 180gr/m² - 190ml/m² 50 micron = 14m²

: 1 layers +/- 90gr/m² - 95ml/m² 25 micron = 21m²

Hardness : H9

Used for : The system can be applied directly or indirectly on all surfaces (porous and non-porous) such as concrete, steel, wood, acrylic, gypsum, painted or unpainted surfaces, indoors, or outdoors.

Application area : Buildings, airports, offshore structures, bridges, tunnels hotels, private housing, etc.

SI12 is an incredibly strong 2-component paint system which forms a durable matrix of molecular bonds (transformation to ceramic) resulting in permanent protection of the surface.

Three simple steps: Clean, Dry, and Apply.

- Easily repels water, dirt, dust, and pollutants.
- This coating is permanent hydrophobic
- Restores damaged finishes and reduces cleaning intervals.
- Resistant to all kinds of chemicals and UV radiation.
- Superior anti-pollution and anti-corrosion properties.
- This coating can withstand temperatures of 300°C. suitable for making walls fire retardant and is most best solution to make rooftops waterproof

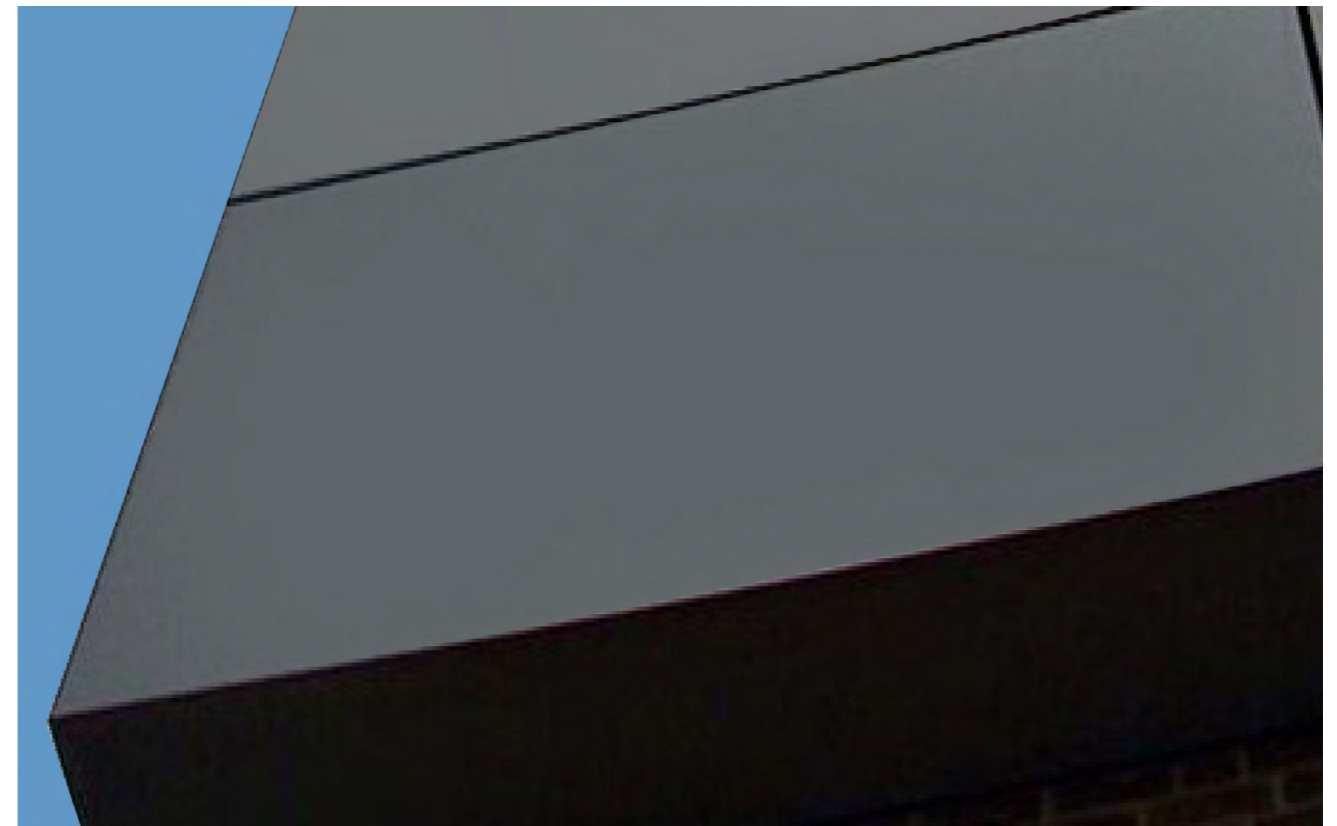
Expected life duration up to 30 years+




How to use: Page 32



Super Strong - Permanent Hydrophobic



-  **Near-permanent**
-  **Anti-corrosion**
-  **Permanent hydrophobic**
-  **Anti-pollution**
-  **Anti-algae**
-  **UV protection**
-  **Self-cleaning
Stays cleaner longer**
-  **Impact Resistance
1kg / 2lbs**
-  **Thermal Shock-Resistant**

SI31

2-Component (2K)

Topcoat Textured Transparent for semi glossy surfaces



Article Nr. : SI312000 2L / 2.000gr

How to use: Page 34

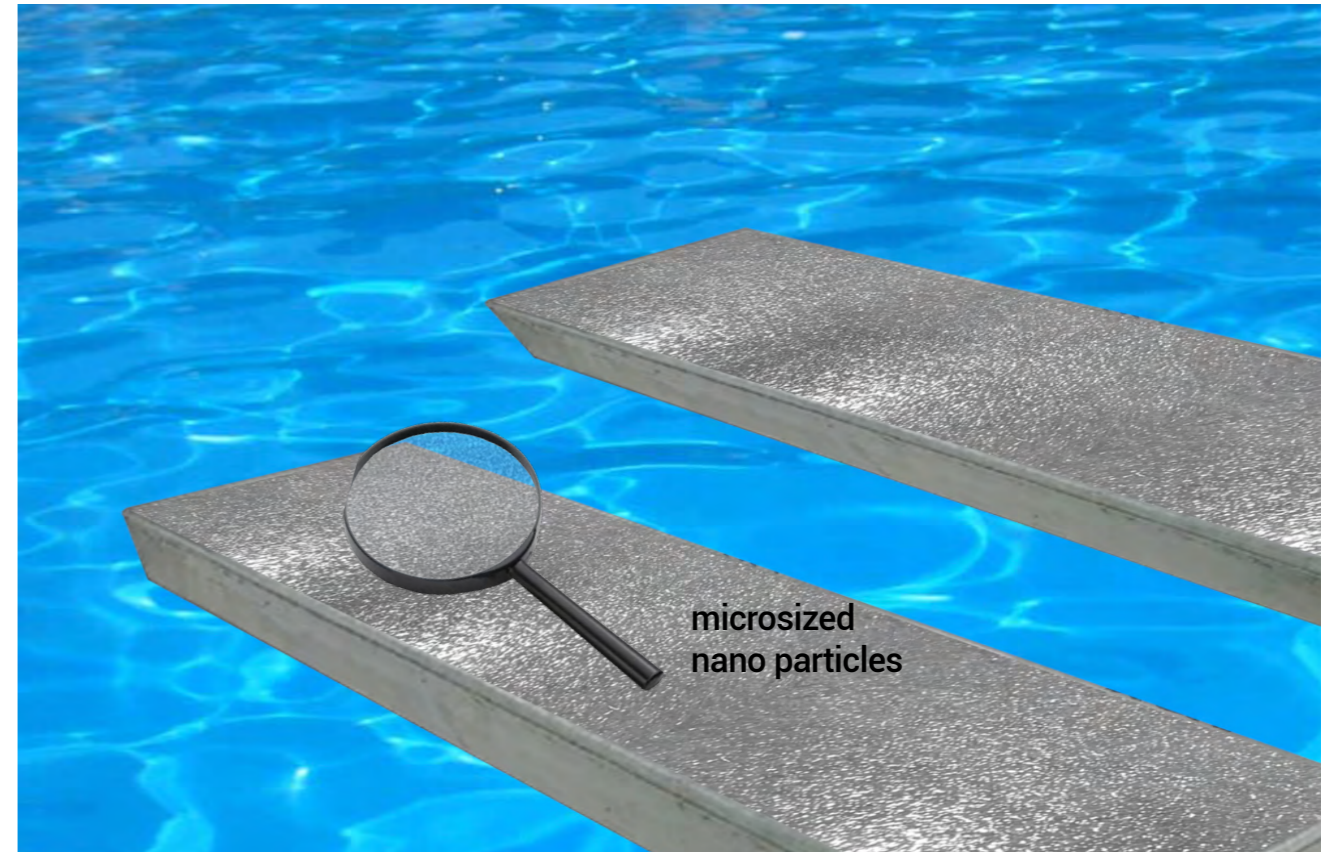
Consumption : 3 layers +/- 222gr/m² - 222ml/m² 90 micron = 9m²
Reachable area : 2 layers +/- 111gr/m² - 111ml/m² 60 micron = 18m²
 : 1 lapisan +/- 74gr/m² - 74ml/m² 30 micron = 27m²
Hardness : H9
Used on : Concrete, Stone, Marble, Wood, Ceramic
 Fiberglass, Epoxi, Aluminium, Steel
Application area : Buildings, airports, offshore structures, bridges, tunnels
 Swimmingpool, Stairs, hotels, floors, private housing, etc.

SI31 is an incredibly strong 2-component textured coating with which forms a durable matrix of molecular bonds (transformation to ceramic) resulting in permanent protection of the surface.

Three simple steps: Clean, Dry, and Apply.

- Easily repels water, dirt, dust, and pollutants.
- This coating has an outstanding hydrophobic effect.
- Restores damaged finishes and reduces cleaning intervals.
- Resistant to all kinds of chemicals and UV radiation.
- This coating does not absorb any water
- Superior anti-pollution and anti-corrosion properties.
- This coating can withstand temperatures of 300°C
- Super for stairs and slippery places indoor or outdoor
- Waterproofing from swimmingpools dll.

Expected life duration up to 30 years+



Super Strong - Non-Slip



SI21

2-Component (2K)

Paint Strongest White Gloss for glossy surfaces



How to use: Page 34

Article Nr. : SI210000 2L / 2.400gr

Consumption : 3 layers +/- 200gr/m² - 165ml/m² 90 micron = 12m²

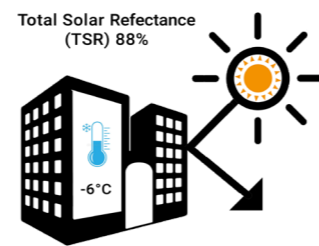
Reachable area : 2 layers +/- 130gr/m² - 110ml/m² 60 micron = 16m²

: 1 layer +/- 65gr/m² - 55ml/m² 30 micron = 24m²

Hardness : H8

Used on : Gelcoat, fiberglass, steel, aluminium, plastics, wood

Application area : Buildings, marine, airports, offshore structures, bridges, hotels, private housing, etc.



SI21 is an incredibly strong 2-component paint system which forms a durable matrix of molecular bonds (transformation to ceramic) resulting in permanent protection of the surface.

Three simple steps: Clean, Dry, and Apply.

- Easily repels water, dirt, dust, and pollutants.
- This coating has an outstanding hydrophobic effect.
- Restores damaged finishes and reduces cleaning intervals.
- Resistant to all kinds of chemicals and UV radiation.
- Superior anti-pollution and anti-corrosion properties.
- This coating can withstand temperatures of 300°C. suitable for making walls fire retardant and is most best solution to make rooftops waterproof and heat reflective.
- Superior alternative for Epoxy flooring or repaints .
- Repaints of ceramic bathroom tiles.
- Zero absorbtion, waterproof.

Expected life duration up to 30 years+

-  Easy to apply
Repaintable
-  Cut maintenance costs
-  Anti-water spot
Anti-corrossion
-  Permanent hydrophobic
-  Self-cleaning stays cleaner longer
-  Anti-scratch
-  Visibility
-  Protects your investment



Anti-Scratch - Repaint Epoxy



SI22

2-Component (2K)

Paint Strongest White Satin for satin surfaces

Article Nr. : SI220000 2L / 2.500gr

Consumption : 3 layers +/- 200gr/m² - 165ml/m² 90 micron = 12m²

Reachable area : 2 layers +/- 130gr/m² - 110ml/m² 60 micron = 16m²

: 1 layer +/- 65gr/m² - 55ml/m² 30 micron = 24m²

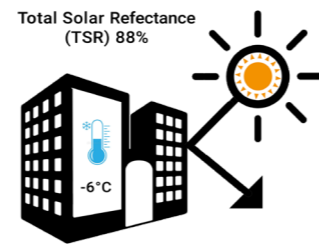
Hardness : H8

Used on : Gelcoat, fiberglass, steel, aluminium, plastics, wood

Application area : Buildings, marine, airports, offshore structures, bridges, hotels, private housing, etc.



How to use: Page 34



SI21 is an incredibly strong 2-component paint system which forms a durable matrix of molecular bonds (transformation to ceramic) resulting in permanent protection of the surface.

Three simple steps: Clean, Dry, and Apply.

- Easily repels water, dirt, dust, and pollutants.
- This coating has an outstanding hydrophobic effect.
- Restores damaged finishes and reduces cleaning intervals.
- Resistant to all kinds of chemicals and UV radiation.
- Superior anti-pollution and anti-corrosion properties.
- This coating can withstand temperatures of 300°C. suitable for making walls fire retardant and is most best solution to make rooftops waterproof and heat reflective.
- Superior alternative for Epoxi flooring or repaints .
- Repaints of ceramic bathroom tiles.
- Zero absorbtion, waterproof.

Expected life duration up to 30 years+

- Easy to apply**
Repaintable
- Cut maintenance costs**
- Anti-water spot**
Anti-corrossion
- Permanent hydrophobic**
- Self-cleaning**
stays cleaner longer
- Anti-scratch**
- Visibility**
- Protects your investment**



Superb adhesion - Repaint Epoxy



SI13 2-Component (2K)

Paint Coolest White for egg-shell surfaces

Article Nr. : SI132000 2L / 3.300gr

Consumption : 2 layers +/- 280gr/m² - 170ml/m² 90 micron = 12m²

Reachable area : 1 layer +/- 140gr/m² - 85ml/m² 45 micron = 24m²

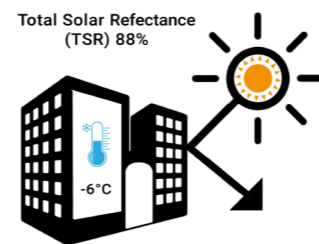
Hardness : H7

Used for : The SI13 system can be applied directly or indirectly on all surfaces (porous and non-porous) such as concrete, steel, wood, acrylic, gypsum, painted or unpainted surfaces, indoors, or outdoors

Application area : Buildings, airports, offshore structures, bridges, tunnels, hotels, private housing, etc.



How to use: Page 34

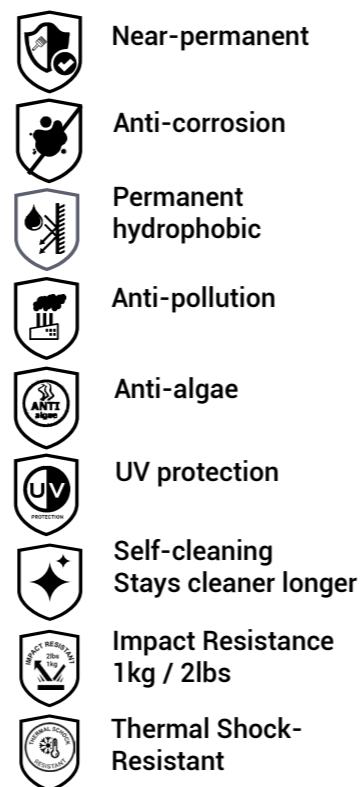


SI13 is an incredibly strong 2-component paint system which forms a durable matrix of molecular bonds (transformation to ceramic) resulting in permanent protection of the surface.

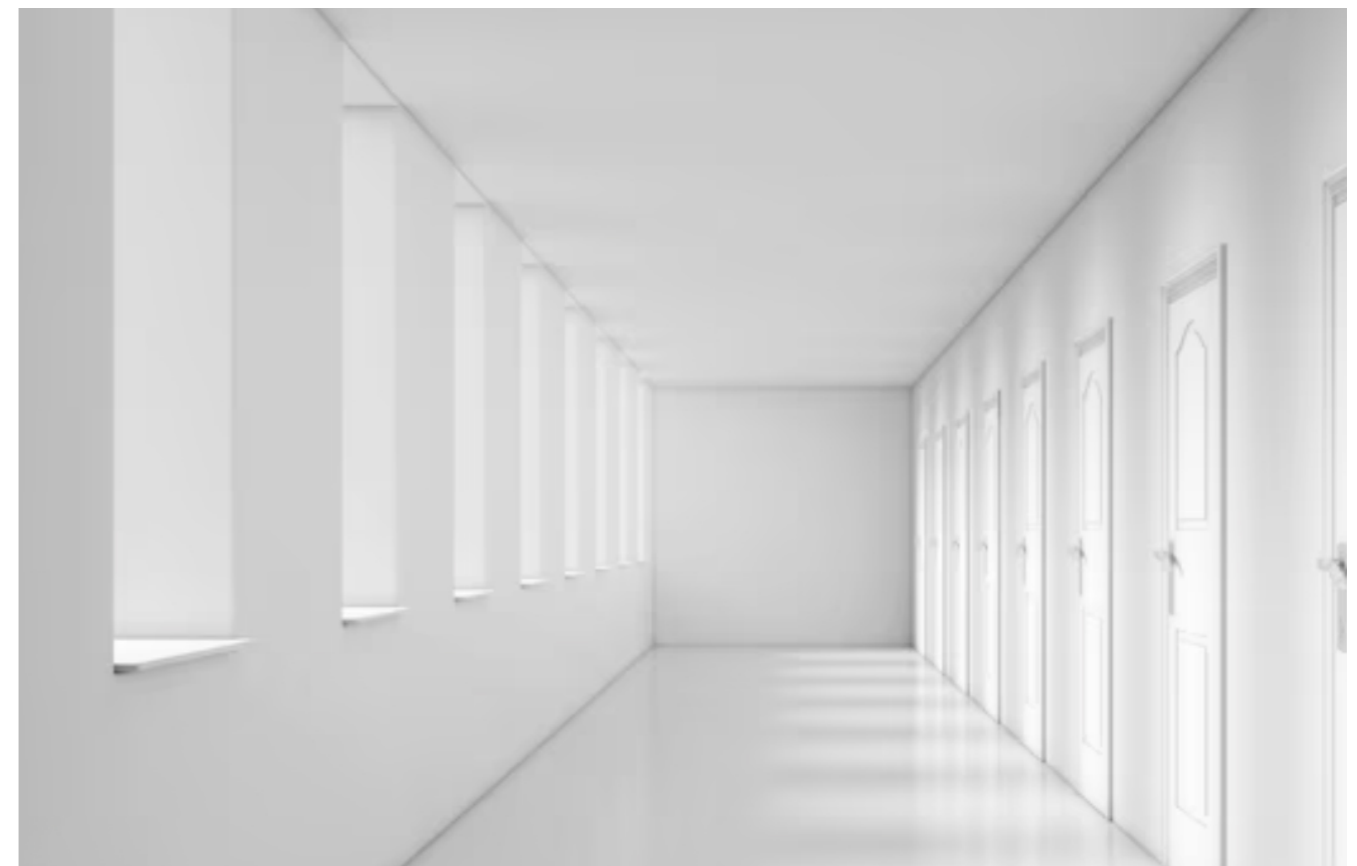
Three simple steps: Clean, Dry, and Apply.

- Easily repels water, dirt, dust, and pollutants.
- This coating is permanent hydrophobic
- Restores damaged finishes and reduces cleaning intervals.
- Resistant to all kinds of chemicals and UV radiation.
- Superior anti-pollution and anti-corrosion properties.
- This coating can withstand temperatures of 300°C. suitable for making walls fire retardant and is most best solution to make rooftops waterproof

Expected life duration up to 30 years+



Passive Cooling - Reflective



SI15

1-Component (1K)

Paint Coolest White for egg-shell surfaces

Article Nr. : SI152000 2L / 3.000gr

Consumption : 2 layers +/- 250gr/m² - 144ml/m² 90 micron = 12m²

Reachable area : 1 layer +/- 125gr/m² - 72ml/m² 45 micron = 24m²

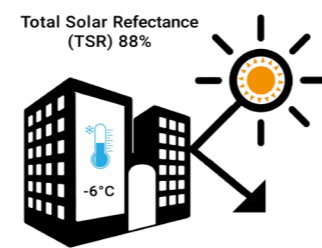
Hardness : H6

Used for : The SI15 system can be applied directly or indirectly on all surfaces (porous and non-porous) such as concrete, steel, wood, acrylic, gypsum, painted or unpainted surfaces, indoors, or outdoors

Application area : Buildings, airports, offshore structures, bridges, tunnels, hotels, private housing, etc.



How to use: Page 34

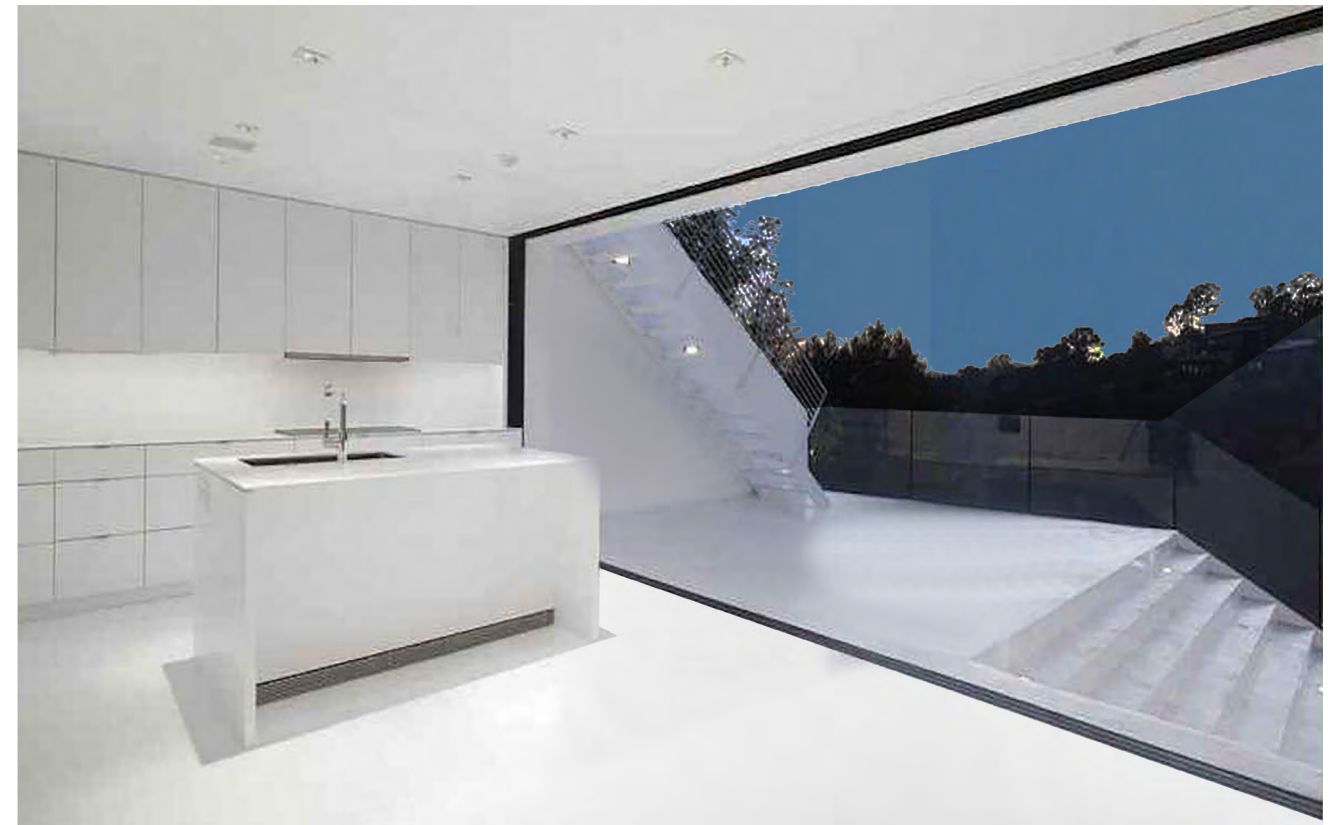
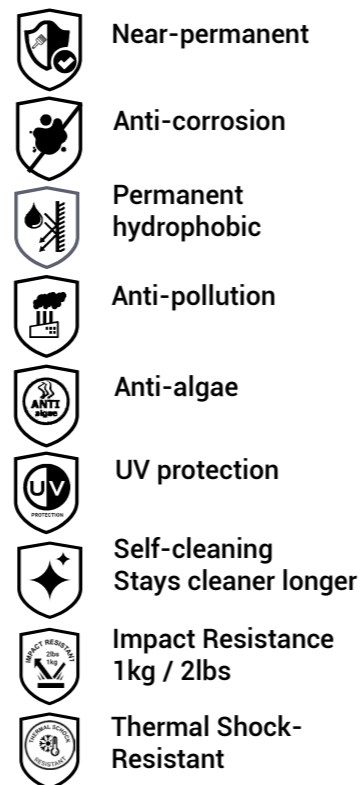


SI15 is an incredibly strong 1-component paint system which forms a durable matrix of molecular bonds (transformation to ceramic) resulting in permanent protection of the surface.

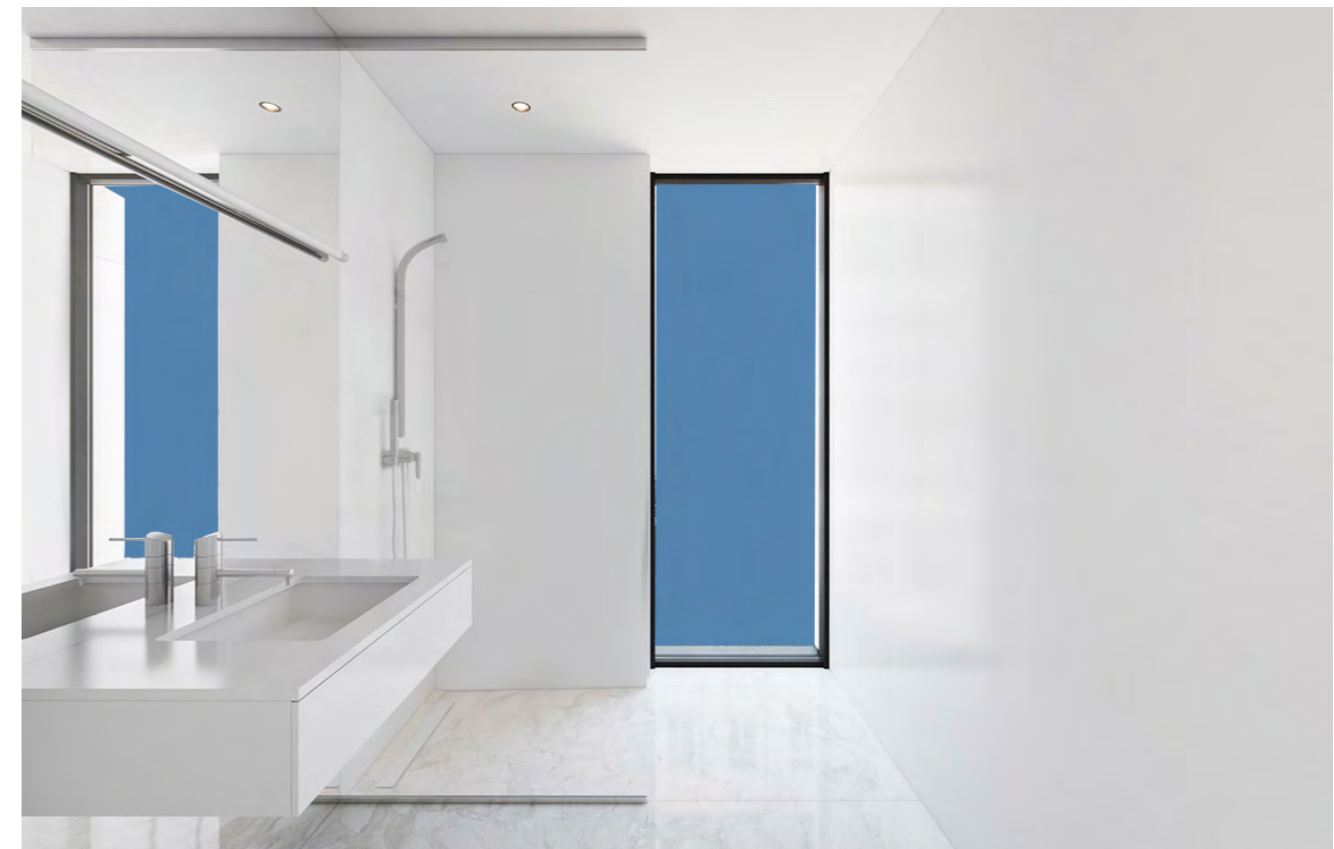
Three simple steps: Clean, Dry, and Apply.

- Easily repels water, dirt, dust, and pollutants.
- This coating is permanent hydrophobic
- Restores damaged finishes and reduces cleaning intervals.
- Resistant to all kinds of chemicals and UV radiation.
- Superior anti-pollution and anti-corrosion properties.
- This coating can withstand temperatures of 300°C. suitable for making walls fire retardant and is most best solution to make rooftops waterproof

Expected life duration up to 20 years+



Chemical - Temperature Resistant (300°C)



SI41 2-Component (2K)

Paint Textured White for satin matte surfaces



Article Nr. : SI412000 2L / 2.400gr

How to use: Page 34

Consumption : 3 layers +/- 200gr/m² - 165ml/m² 105 micron = 12m²

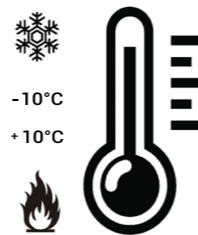
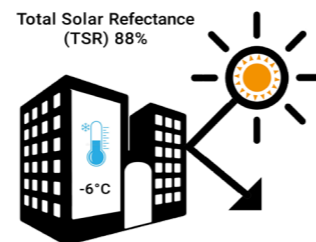
Reachable area : 2 layers +/- 130gr/m² - 110ml/m² 70 micron = 16m²

: 1 layer +/- 65gr/m² - 55ml/m² 35 micron = 24m²

Hardness : H9

Used on : Concrete Gelcoat, fiberglass, steel, aluminium, plastics, wood, radiator pipes, virtually any surface.

Application area : Buildings, marine, airports, offshore structures, bridges, tunnelshotels, floors private housing, etc.



SI41 is an armored super strong textured 2-component thermal insulation paint system which forms a durable matrix of molecular bonds (transformation to ceramic) resulting in permanent protection of the surface. Shields against heat cold and reduces EMI-RF Interference.

Three simple steps: Clean, Dry, and Apply.

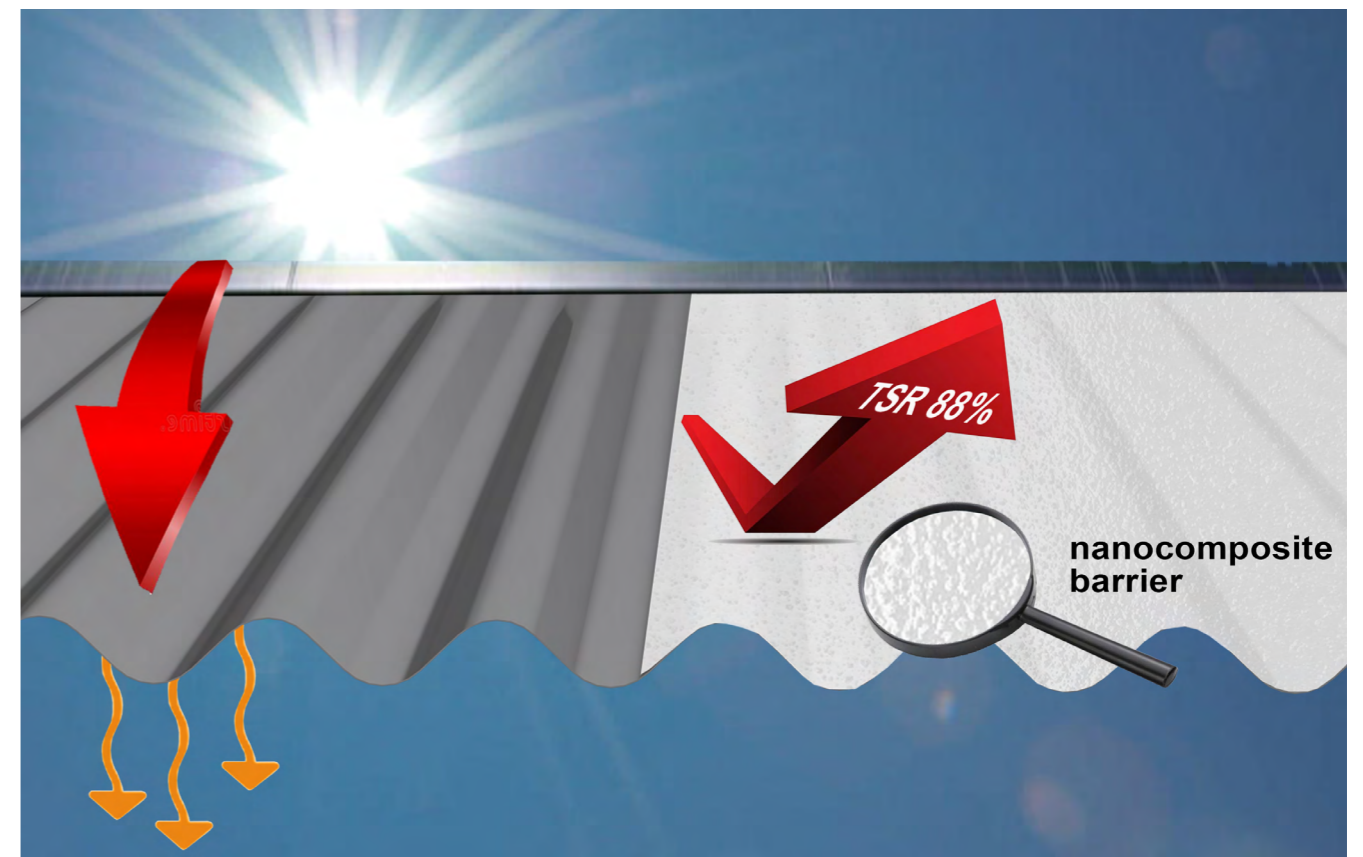
- Easily repels water, dirt, dust, and pollutants.
- This coating has an outstanding hydrophobic effect.
- Restores damaged finishes and reduces cleaning intervals.
- Resistant to all kinds of chemicals and UV radiation.
- Superior anti-pollution and anti-corrosion properties.
- This coating can withstand temperatures of 300°C.
- Suitable for making walls fire retardant and is most best solution to make rooftops waterproof and heat reflective.
- Superior alternative for Epoxi flooring or repaints .
- Repaints of ceramic bathroom tiles.
- Zero absorbtion, waterproof.

Expected life duration up to 30 years+

- Easy to apply Repaintable
- Cut maintenance costs
- Anti-water spot Anti-corrosion
- Permanent hydrophobic
- Self-cleaning stays cleaner longer
- Anti-scratch
- Takes care your health
- Protects your investment
- Safes 10-20% on electriety



Cool Down or Insulate - Armored



SI42 2-Component (2K)

Paint Textured White for matte surfaces



Article Nr. : SI422000 2L / 2.500gr

How to use: Page 34

Consumption : 3 layers +/- 200gr/m² - 165ml/m² 105 micron = 12m²

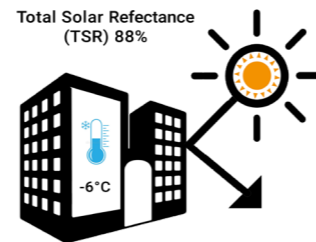
Reachable area : 2 layers +/- 130gr/m² - 110ml/m² 70 micron = 16m²

: 1 layer +/- 65gr/m² - 55ml/m² 35 micron = 24m²

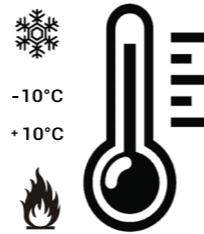
Hardness : H9

Used on : Concrete Gelcoat, fiberglass, steel, aluminium, plastics, wood, radiator pipes, virtually any surface.

Application area : Buildings, marine, airports, offshore structures, bridges, tunnelshotels, floors private housing, etc.



Total Solar Reflectance (TSR) 88%



-10°C

+10°C

SI42 is an armored super strong nano particle textured 2-component thermal insulation paint system which forms a durable matrix of molecular bonds (transformation to ceramic) resulting in permanent protection of the surface. Shields against heat, cold and reduces EMI-RF Interference.

Three simple steps: Clean, Dry, and Apply.

- Easily repels water, dirt, dust, and pollutants.
- This coating has an outstanding hydrophobic effect.
- Restores damaged finishes and reduces cleaning intervals.
- Resistant to all kinds of chemicals and UV radiation.
- Superior anti-pollution and anti-corrosion properties.
- This coating can withstand temperatures of 300°C. suitable for making walls fire retardant and is most best solution to make rooftops waterproof and heat reflective.
- Superior alternative for Epoxy flooring or repaints .
- Repaints of ceramic bathroom tiles or plastics
- Zero absorbtion, waterproof.

Expected life duration up to 30 years+



**Easy to apply
Repaintable**



Cut maintenance costs



**Anti-water spot
Anti-corrosion**



**Permanent
hydrophobic**



**Self-cleaning
stays cleaner longer**



Anti-scratch



**Takes care
your health**



**Protects your
investment**



**Saves 10-20% on
electricity**



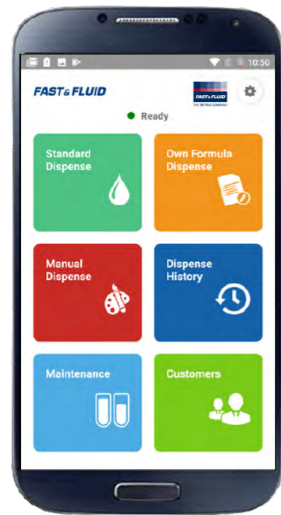
Shields Noise and EMI-RF interference



Color mixing has never been so easy!!!

X- SMART is the modular version of the acclaimed dispenser series, extremely cost-effective and easy to operate, with a low maintenance

This color mixer has a robust and tubeless design, built with a patented pump technology (to reduce waste) and identical features, making it a highly advanced dispenser, ideally suited to reduced capacity.



Prisma-RT is a cloud-based innovative mobile color application compatible with the X-SMART dispenser. It brings the best of wireless technology without the associated investment costs in hardware.

Customers do not have to provide computers and other accessories or set up servers, eliminating the need for complicated and time-consuming installation and configuration.

This smart Prisma-RT device helps to fix prices and taxes and can print labels via Wi-Fi.

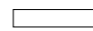
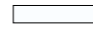


X-SMART Stabilizer plates





16 High Grade Coloring chemicals





Titanium White
Masstone 
Tint 
844-0061 4L





Quinacridone Red
Masstone 
Tint 
844-0451 1L





Scarlet Red
Masstone 
Tint 
844-0526 1L





Lead Free Orange
Masstone 
Tint 
844-0982 1L





Trans Red Oxide
Masstone 
Tint 
844-1054 1L


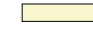


Red Oxide
Masstone 
Tint 
844-1063 1L





Burnt Umber
Masstone 
Tint 
844-1352 1L


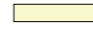


Trans Yellow Oxide
Masstone 
Tint 
844-1852 1L


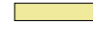


Yellow Oxide
Masstone 
Tint 
844-1863 1L

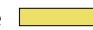
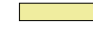


Lead Free Med Yellow
Masstone 
Tint 
844-2555 1L





Yellow
Masstone 
Tint 
844-2826 1L





Organic Yellow
Masstone 
Tint 
844-2852 1L





PHTHALO Green
Masstone 
Tint 
844-5558 1L





Quinacridone Violet
Masstone 
Tint 
844-9451 1L



Lamp Black
Masstone 
Tint 
844-9955 1L



PHTHALO BLUE
Masstone 
Tint 
844-7262 1L

Color card

Other colors need minimal 100kg

Residential

SI13 White Egg-Shell (Flat Finish) 15/25 (20/60°)	SI41 Textured White Semi Gloss 41/69 (20/60°)
SI15 White Egg Shell (Flat Finish) 18/28 (20/60°)	SI42 Textured White Matte 11/21 (20/60°)
SI21 White Gloss 49/77 (20/60°)	
SI22 White Satin 33/59 (20/60°)	

Original

Cool white

RAL 9001

Cream white

RAL 9002

Grey white

RAL 9003

Signal white

RAL 9004

Signal black

RAL 9005

Jet black

RAL 9006

White aluminium

RAL 9007

Grey aluminium

RAL 9010

Pure white

RAL 9011

Graphite black

RAL 9016

Traffic white

RAL 9018

Papyrus white

RAL 9022

Pearl light grey

RAL 9023

Pearl dark grey

RAL 1000

Green beige

RAL 1001

Beige

RAL 1002

Sand yellow

RAL 1011

Brownbeige

RAL 1013

Pearl white

RAL 1014

Ivory

RAL 1015

Light Ivory

RAL 9017

Traffic black

RAL 3015

Light pink

RAL 6007

Pastel blue

RAL 4009

Pastell violet

RAL 6027

Light green

RAL 7000

Squirrel grey

RAL 1036

Pearl gold

RAL 8029

Pearl copper

RAL 4012

Pearl blackberry

RAL 6025

Pearl gentian blue

RAL 6036

Pearl opal green

RAL 8016

Mahogany braun

Wood

SI11 Transparent Gloss 51/78 (20/60°)

SI12 Transparent Matte 11/21 (20/60°)

SI11 Transparent

SI11 Light

SI11 Nut

SI11 Colonial

Industrial

SI11 Transparent Gloss 51/78 (20/60°)

SI21 White Gloss 49/77 (20/60°)

SI22 White Satin 33/59 (20/60°)

Transparent

RAL 1026

Lumious yellow

RAL 3020

Traffic red

RAL 9005

Jet black

RAL 1004

Golden yellow [Cat]

RAL 6002

Leaf green [J.D Deere]

RAL 7035

Light grey

RAL 7011

Dark grey

RAL 7003

Silver grey

RAL 8002

Signal brown

RAL 8025

Pale brown

Marine

SI12 Transparent Matte 11/21 (20/60°)

SI41 Textured White Semi Gloss 41/69 (20/60°)

SI42 Textured White Matte 11/21 (20/60°)

Original

Cool white

RAL 9010

Pure white

RAL 9001

Cream white

RAL 9023

Distant blue

RAL 1023

Traffic yellow

RAL 7001

Silver gray

RAL 1015

Light Ivory

RAL 9016

Pure white

RAL 9001

Cream

RAL 1001

Beige

RAL 1020

Olive yellow

Military

SI31 Textured Transparent Semi Gloss 41/69 (20/60°)

SI33 Textured Black Semi Gloss 41/69 (20/60°)

RAL 3000

Fire red

RAL 3004

Burgundy

RAL 7036

Platinum

RAL 9005

Jet Black

RAL 6005

NATO green

RAL 7024

Graphite grey

RAL 1015

Desert sand

RAL 9000

Violet blue

RAL 9012

Light blue

RAL 9002

Ultramarine blue

RAL 9013

Sapphire blue

RAL 5005

Signal blue

Antifouling

SI14 Color 3141 (20/60°)

Original

Light stone

RAL 6031

Bronze green

RAL 4451

Brunswick green

RAL 7016

Dark sea grey

RAL 5008

[RAF] Blue grey

RAL 1015

Desert sand

RAL 9000

Violet blue

RAL 9012

Light blue

RAL 9002

Ultramarine blue

RAL 9013

Sapphire blue

RAL 5005

Signal blue

Antifouling

SI14 Color 3141 (20/60°)

Original

Transparent

RAL 9005

Jet Black

RAL 3001

Signal Red

RAL 9002

Ultra marine blue

RAL 7004

Signal Grey

SIX1

2-Component (2K)

Primer Epoxy Polyamide

heavy duty - anti-corrosion

Article Nr.	: SIX11250 1.25L / 1.2kg SIX15000 5L / 4.8kg
Consumption	: 2 layers +/- 240gr/m ² - 250ml/m ² 80 micron = 5m ²
Reachable area	: 1 layer +/- 120gr/m ² - 125ml/m ² 40 micron = 10m ²
Hardness	: H5
Colors	: White, Grey or RAL (RAL Minimum Order 250pcs 5L)
Used on	: Concrete, Steel, Aluminium, Fiberglass and other organic surfaces
Application area	: Buildings, marine, airports, offshore structures, bridges

SIX1 is a solvent based epoxy polyamide primer. This primer is used for corrosion protection on concrete, stainless, galvanized, carbon and alloy steel, aluminum in corrosive conditions and has excellent adhesion to all organic substrates and to all of our ceramic topcoats. The primer can be applied at a relative humidity of 40-80% and can be painted over within 8 hours 30°C, 1 hours 60°.



Fast Repaintable



Excellent adhesion



Heavy Duty Primer - Smooth Surfacer



SIX2

2-Component (2K)

Primer Surfacer Acrylic Alkyd

smooth - surface modifier

Article Nr.	: SIX21250 1.25L / 1.2kg SIX25000 5L / 4.8kg
Consumption	: 2 layers +/- 200gr/m ² - 210ml/m ² 60 micron = 6m ²
Reachable area	: 1 layer +/- 100gr/m ² - 105ml/m ² 30 micron = 12m ²
Hardness	: H3
Colors	: White, Grey
Used on	: Steel, aluminium, wood, fiberglass, and old paint systems.
Application area	: Buildings, hotels, private housing, etc.

SIX2 High-quality 2K surfacer (two-component basecoat) for auto-refinish, marine, and industrial coating applications where a smooth surface is required. The primer has excellent adhesion to all organic substrates and to all of our ceramic topcoats. The primer can be applied at a relative humidity of 30-80% and can be painted over within 4 hours 30°C, 1 hours 60°.



Fast Repaintable



Excellent adhesion

SIX3

2-Component (2K)

Primer PU Wood Filler

surface modifier - absorption reducer

Article Nr.	: SIX31500 1.5L / 1.4kg
Consumption	: 2 layers +/- 175gr/m ² - 185ml/m ² 60 micron = 8m ²
Reachable area	: 1 layer +/- 115gr/m ² - 95ml/m ² 30 micron = 12m ²
Hardness	: H4
Colors	: Transparent
Used on	: Wood, Natural Stone, and other organic surfaces
Application area	: Buildings, marine, hotels, private housing, etc.

SIX3 is a solvent borne transparent wood filler. This primer is used as surface modification for, wood or natural stone to reduce capillary absorption and has an excellent adhesion to all organic substrates and towards one of our ceramic top coats. The primer can be applied at a relative humidity of 40-80%.



Fast Repaintable



Excellent adhesion



Wood or Natural Stone - Filler

SIX4

1-Component (1K)

Primer Acrylic Waterbased

all surfaces modifier

Article Nr.	: SIX41000 1L / 1.2kg SIX44000 4L / 4.8kg
Consumption	: 2 layers +/- 240gr/m ² - 200ml/m ² 60 micron = 5m ²
Reachable area	: 1 layer +/- 120gr/m ² - 100ml/m ² 30 micron = 10m ²
Hardness	: H3
Colors	: White, Grey or RAL (RAL Minimum Order 250pcs 4L)
Used on	: Concrete, wood, drywalls and old waterbased paints
Application area	: Buildings, walls and ceilings indoor or outdoor

SIX4 Acrylic Water-Based Primer is a premium, all-purpose primer-sealer with excellent adhesion, stain-blocking, and hiding power. Ideal for both interior and exterior surfaces, it bonds to glossy surfaces without sanding, effectively blocks stains, and provides a smooth foundation for any solvent-based or water-based topcoat.



Fast Repaintable



Excellent adhesion



VOC Free



SIX5 2-Component (2K)

Putty Polyester ultra smooth - sandable

- Article Nr.:** : SIX51000 1.0kg
- Colors:** : Grey
- Used on:** : Metal, wood, fiberglass, concrete, plastics
- Application area:** : Buildings, marine, airports, offshore structures, bridges private housing, etc.



- Fast Repaintable**
- Excellent adhesion**

SIX5 is a High quality 2 (two) component Epoxy base putty for auto-refinish, marine and industrial coating applications.



Substrate Kit, Test, Touch and Feel

Substrate Kit
16 different coating and paints



DEMOSKIT
All our products are produced according to EU/ECHA USA/OSHA/EPA CANADA/WHIMS regulations

Video Application & (Test) Results

SGS TEST REPORTS SCAN QR-CODE

TECHNICAL VIDEO SCAN QR-CODE

TEST REPORT EN 1504-2 SCAN QR-CODE

Scan QR Code for TDS and SDS

NANO-CERAMIC®
WWW.NANO-CERAMIC.COM THE NEXT GENERATION COATINGS

Instructions for use:
Make sure the surface is free from contamination and dirt. A dry, hot primer can be used in case of problems with the substrate at its concrete application. The Primer should give the 60/10/20/20 adhesion rate 0.
Mix B1141800 (Coating) with B118200 (Activator), or mix in an exact ratio 5:1 NET WEIGHT using scale. The surface must be absolutely dry before application. Apply 0.5 mm layer in a thickness of approx. 75 microns 2-3 mm after drying.
Thickness is to be determined by interferometry.
Let the surface dry for 24 hours. In a humidity of 1 hour, after 24 hours 0.5% solvent and the remaining 0.5% solvent remains into ceramicity in fully cured after 7 days. Be aware that the mixed content cannot be stored longer than 3 months.
75-80 microns / 3-4 mil covers +/- 7-14m² / 7.5-14m²
Content: 1.8L / 60oz [NET WT: 1.73 kg / 3.8 LBS]

WARNING!
EXPLOSION HAZARD
FLAMMABLE LIQUID
VAPOR AND SPRAY MIST HARMFUL
EXPOSURE MAY CAUSE LUNG DAMAGE, ALLERGENIC REACTION OR RESPIRATORY REACTION. MAY BE HARMFUL IF SWALLOWED. MAY CAUSE EYE, SKIN, NOSE AND THROAT IRRITATION.

2K CERAMIC COATING
Super Durable Utilizes Nano-Technology
UV / Chemical / 300°C / 600°F Resistant

Perfect adhesion on:
Fiberglass, Epoxy, Aluminum, Steel, Concrete, Stone, Wood, Acrylic, Copper.
Content: Epoxy Resin, F17FE Additive, Diisocyanate Acid.
Finish: Glossy
Sheen: 5178 (50-60°)

PERMANENT COATING / PAINT SYSTEM

GLOSS **TRANSPARENT / COLORABLE** **TRANSPARENT**

TDS NANO-CERAMIC®

Product identification: 2K11 (2K) Polyester Coating (Glossy Finish)

Product name: 2K11 (2K) Polyester Coating (Glossy Finish)

Manufacturer: NANO-CERAMIC S.p.A.

Country: Italy

Design: High Performance Coating - 100% Solvent Free

Material: 2K11 (2K) Polyester Coating (Glossy Finish)

Material description: 2K11 (2K) Polyester Coating (Glossy Finish) is a high performance, solvent-free, two-component epoxy resin system. It is designed for use on a wide range of substrates, including metal, wood, and concrete. The system consists of a resin (B1141800) and a hardener (B118200). The resin is a clear, colorless liquid, and the hardener is a white, powdery solid. The two components are mixed in a 5:1 ratio by weight and applied to the substrate. The system is designed for use on a wide range of substrates, including metal, wood, and concrete. The system consists of a resin (B1141800) and a hardener (B118200). The resin is a clear, colorless liquid, and the hardener is a white, powdery solid. The two components are mixed in a 5:1 ratio by weight and applied to the substrate.

SDS NANO-CERAMIC®

Product identification: 2K11 (2K) Polyester Coating (Glossy Finish)

Product name: 2K11 (2K) Polyester Coating (Glossy Finish)

Manufacturer: NANO-CERAMIC S.p.A.

Country: Italy

Design: High Performance Coating - 100% Solvent Free

Material: 2K11 (2K) Polyester Coating (Glossy Finish)

Material description: 2K11 (2K) Polyester Coating (Glossy Finish) is a high performance, solvent-free, two-component epoxy resin system. It is designed for use on a wide range of substrates, including metal, wood, and concrete. The system consists of a resin (B1141800) and a hardener (B118200). The resin is a clear, colorless liquid, and the hardener is a white, powdery solid. The two components are mixed in a 5:1 ratio by weight and applied to the substrate.



How to use our Permanent Coating System:

These products can be stored for up to 24 months (in a dry, temperature-stable dark environment)

Processing Temperature:

Ambient temperature: 5-30°C
Avoid direct sunlight, Rain and /or high humidity.

IMPORTANT:

Before you use a NANO-CERAMIC product, please make sure you wear suitable protection gear. We always recommend using a paint suit, respirator mask and latex or nitrile gloves.

Outfit/Applicators:



Fresh Air Respirator



Paint Suit



Nitrile gloves



Professional Paint Sprayer
1.3-1.7mm / 0.05-0.06" nozzle



Paint Roller
(Microfiber)



Respirator



Paint Brush
(acrylic)

Application information

The SI11/SI12/SI13/SI15/SI21/SI22/SI31/SI41/SI42 coatings can be applied directly or indirectly on all surfaces (porous and non-porous) such as concrete, steel, wood, acrylic, gypsum, painted or unpainted surfaces, indoors, or outdoors. The surface underneath will be superbly protected against erosion and corrosion and will stay cleaner longer. Cleaning becomes quicker, easier, and less expensive, as special cleaning agents are unnecessary.

Preparation

Make sure the surface is free from any contamination and dirt. A zinc rich primer can be used in case of problems with the substrate.

Warning the surface must be completely dry before application and must stay dry for 6 hours after application!

The 2-Component Permanent Coating System

Mix the can SI11B-SI12B-SI13B with the can of SI11A-SI12A-SI13A by pouring can B into can A, or measure exactly by net weight in a ratio of 9:1 and mix very well. Mix the can SI21B-SI22B-SI41B-SI42B with the can of SI21A-SI22A-SI41A-SI42A by pouring can B into can A, or measure exactly by net weight in a ratio of 9:1 and mix very well. Mix the can of SI13B with the can of SI13A by pouring can B into can A, or measure exactly by net weight in a ratio of 9:1 and mix very well. Carefully pour the mixed contents into a professional paint sprayer, and spray in thin layers until the surface reaches your desired thickness. Depending on the surface, material and structure, different application techniques can be used (such as paint rollers or brushes). Let the surface dry for 24 hours. It is touch-dry in 1 hours, after 4 hours, 85% cured, and the remaining 15% (transformation into ceramics) is fully cured after 7 days. Be aware that the mixed contents cannot be stored longer than 3 hours. The surface can simply be maintained with a high pressure washer at 80 bar using our biologically degradable Reactivating Shampoo SHRE.

Tool cleaning

The individual components, as well as the mixing system of the paint sprayer, can be diluted and cleaned using our THIN Thinner Solvent.

SOLV

 Thinner solvent

for all types of our ceramic paint & coating



Article Nr. : SOLV0400 400ml / 345gr SOLV2000 2L / 1760gr SOLV5000 5L / 4400gr

All our paints and coatings are ready to use, for certain spray applications, especially dark colors who require more than average color pigments, it may be necessary to use a little thinner solvent to achieve optimum flowability.

RETA/ACCL

 Retarder Accelerator


slow down flash time or speed up curing

Article Nr. : RETA0400 400ml / 345gr ACCL0200 200ml / 180gr

If your application need longer flash time (longer time to build up the layer with a second or third coat you can add the RETA Retarder.

In case you want to speed up the curing process you can add the ACCL Accelerator.

E-Warranty

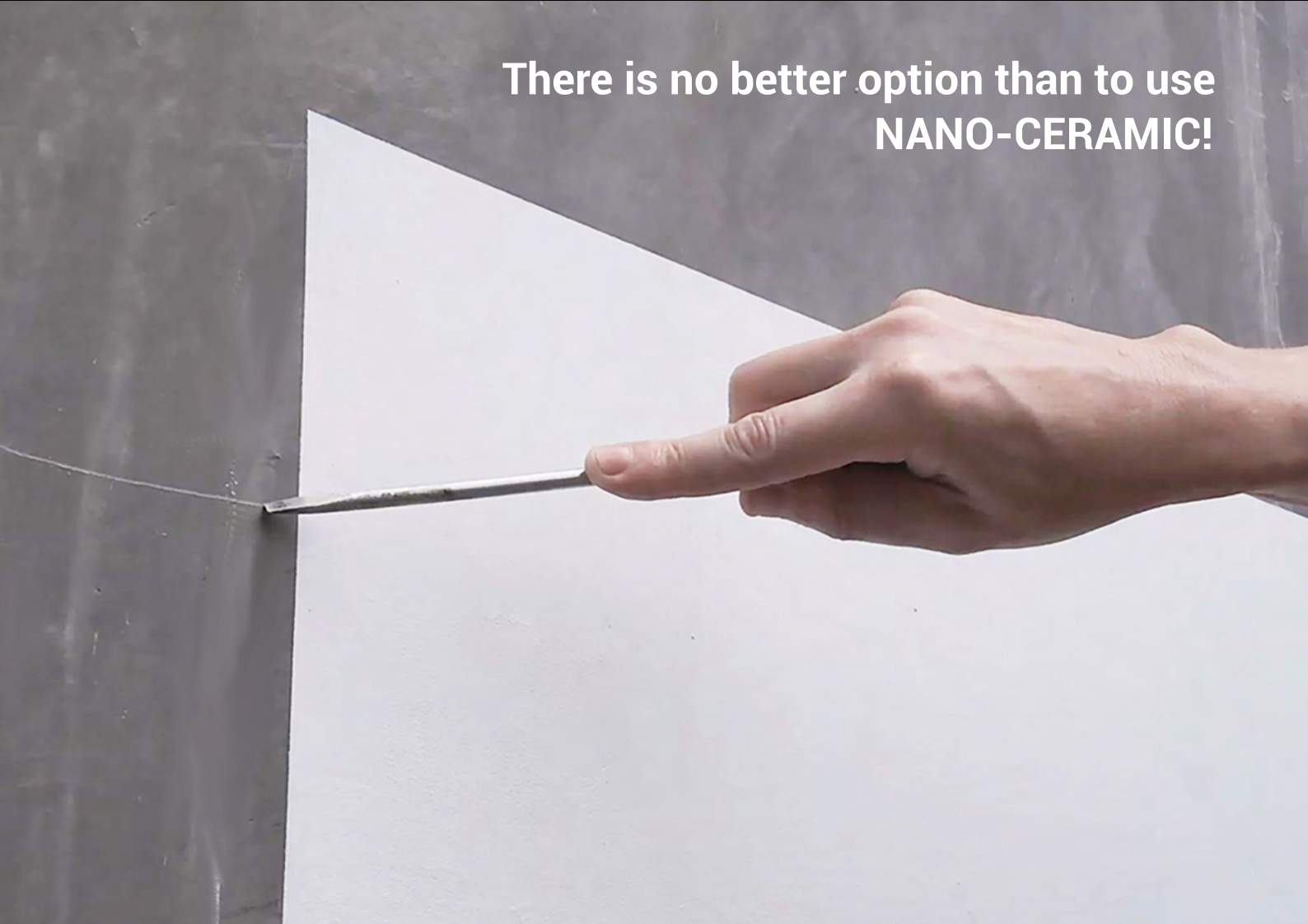
Guarantee of quality and reliability of NANO-CERAMIC is guaranteed for 10 years if applied to the maximum thickness as indicated on the product page This limited product warranty covers the purchaser for installation in a new building application when installed professionally and supervised by an approved installer. The warranty applies only to newly constructed concrete wall applications, and warrant only against discoloration, peeling, cracking or delaminating. No warranty caused by surface/concrete cracks. All claims caused by cleaning chemicals, other than our SHRE Pure Shine Shampoo will be rejected. The warranty is valid only if registered by one of our approved installers through our Dealership Electronic Warranty registration form on our website.

NANO-CERAMIC®



WWW.NANO-CERAMIC.COM INDUSTRIAL PROTECTIVE COATINGS

There is no better option than to use
NANO-CERAMIC!



The Leader in Durability

Did you know?

*That our coatings are made
of pure silica sand, which is
the most common element
on Earth?*

Dealer